

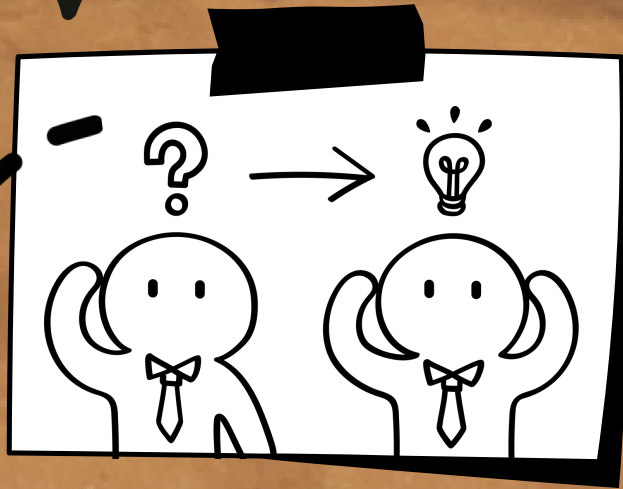
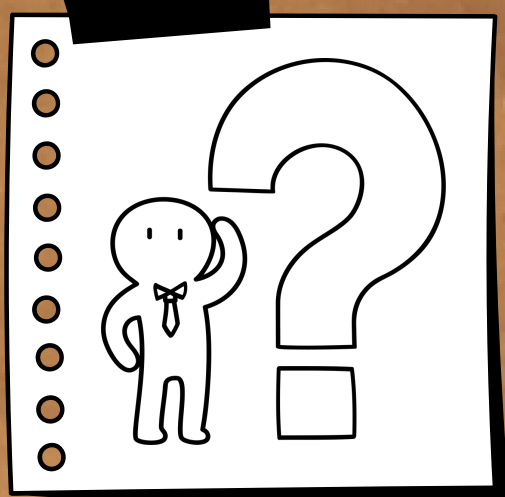
E-PEDAGOGY ON SLS

LEARNING PROGRESS

Track students' Learning Progress
(#Track_Progress_With_SLS)

WHAT IT IS

Learning Progress shows the overall progress (in terms of marks) of students in a Class Group based on their attempted assignments. You can select questions you wish to monitor and view them from the Learning Progress page.



WHY DO IT

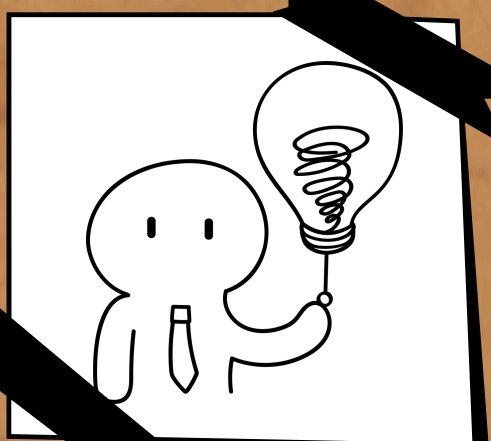
- Discuss learning outcomes that your students have done not so well in and identify students who need more support.
- Click on specific questions or students to investigate specific areas that the students are struggling in.

HOW TO DO IT

1. From your Class Groups page, select a Class Group from your Subjects.
2. Click View Learning Progress found on the top right of the page.
3. The donut chart shows the Awarded Marks out of the Total Marks.
4. The overall progress of students can be viewed in either Topical, Monthly or Student view.



DETAILS ON LEARNING PROGRESS



Click Me!