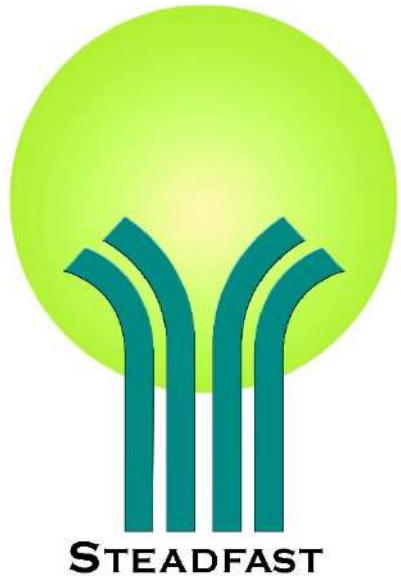


**BLANGAH RISE
PRIMARY SCHOOL**



PRIMARY 6 PARENTS' BRIEFING

The Learning Campus where we Grow *Deep* and Grow *Together*

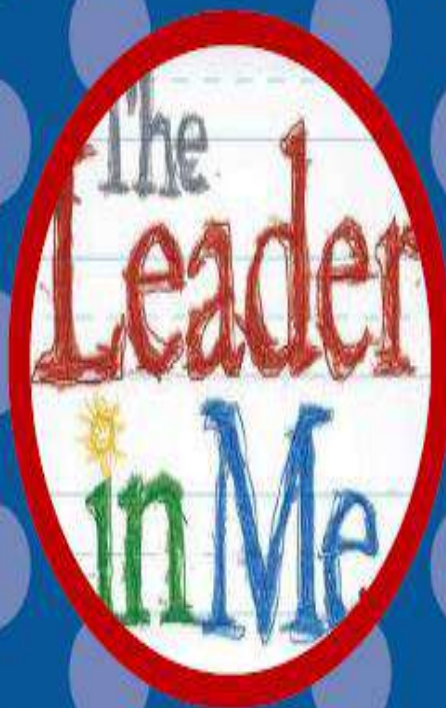
P6 PARENTS BRIEFING

- Distinctive School Programme
- Level Programmes
- Preparation for PSLE
- Support from home
- Interaction with Teachers

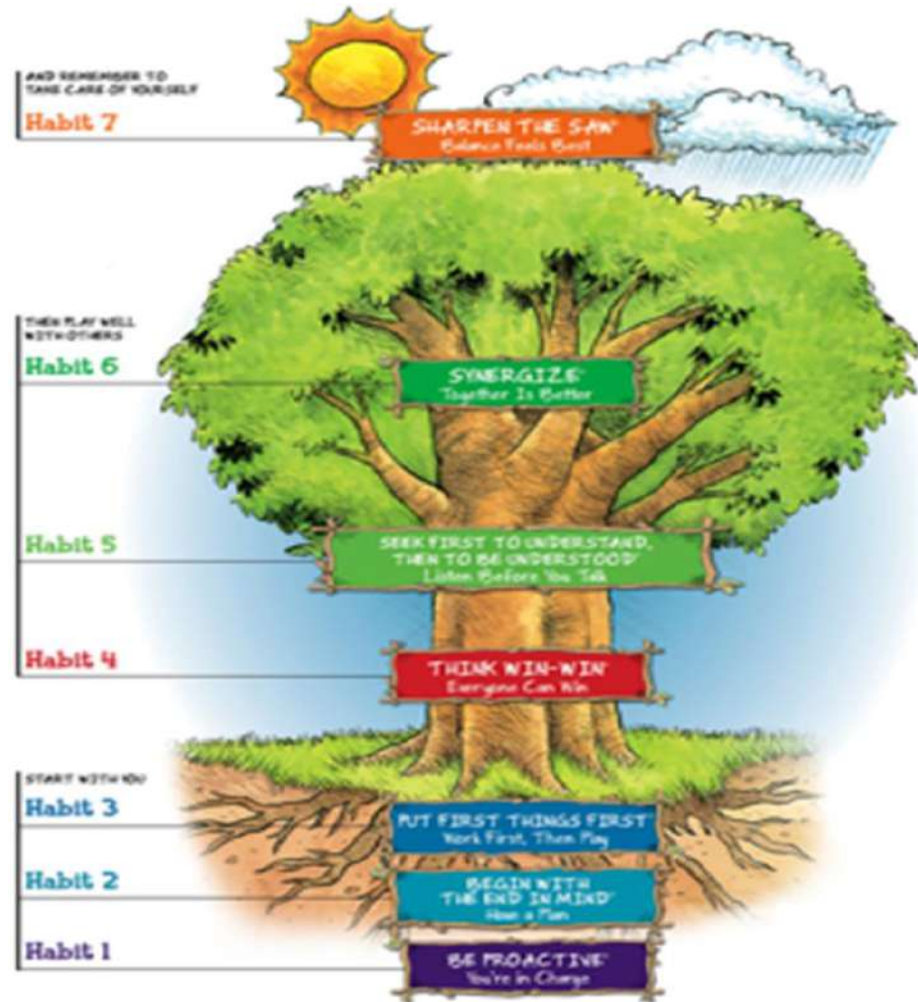


The 7

Habits

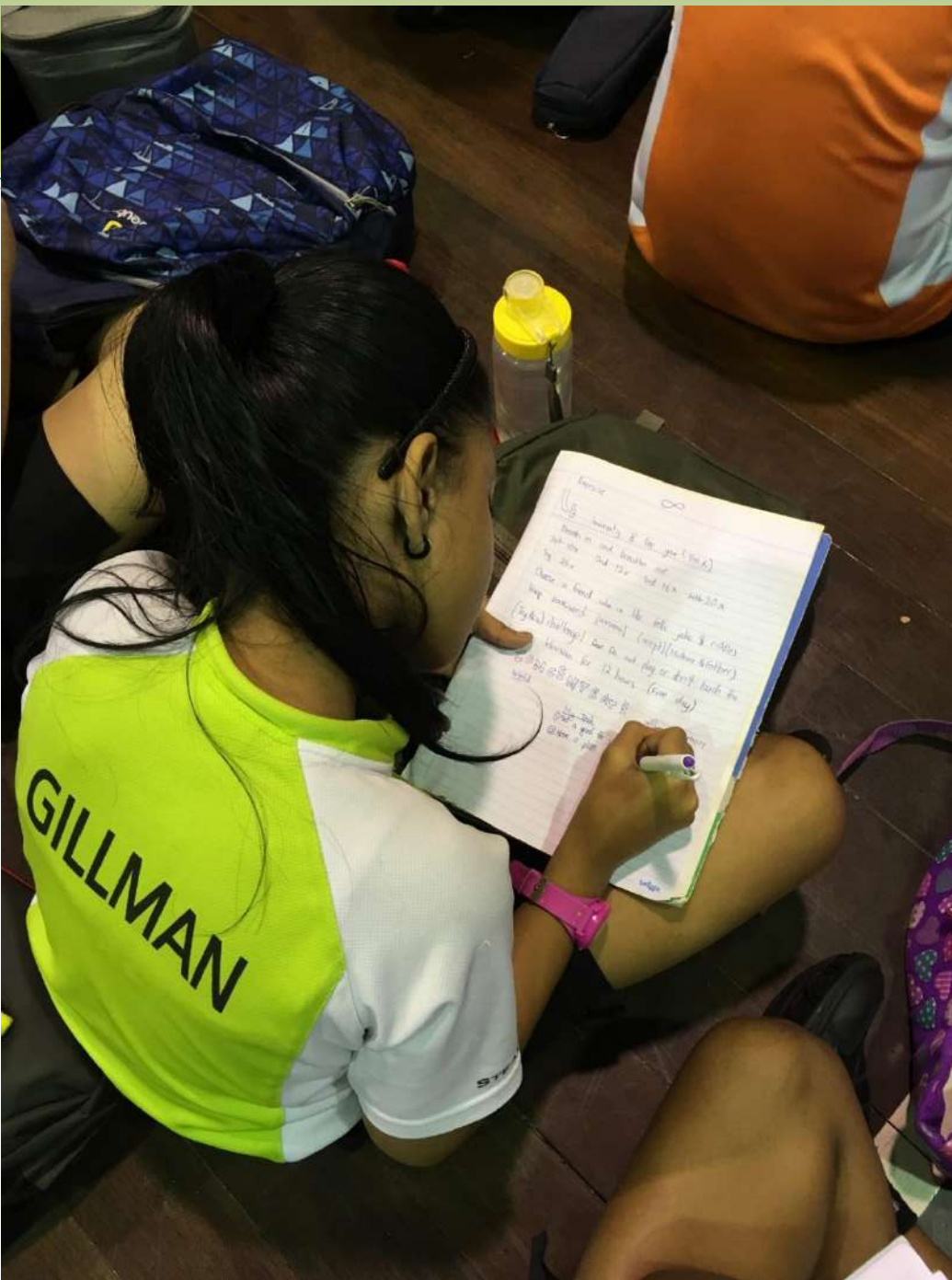


LEADER IN ME



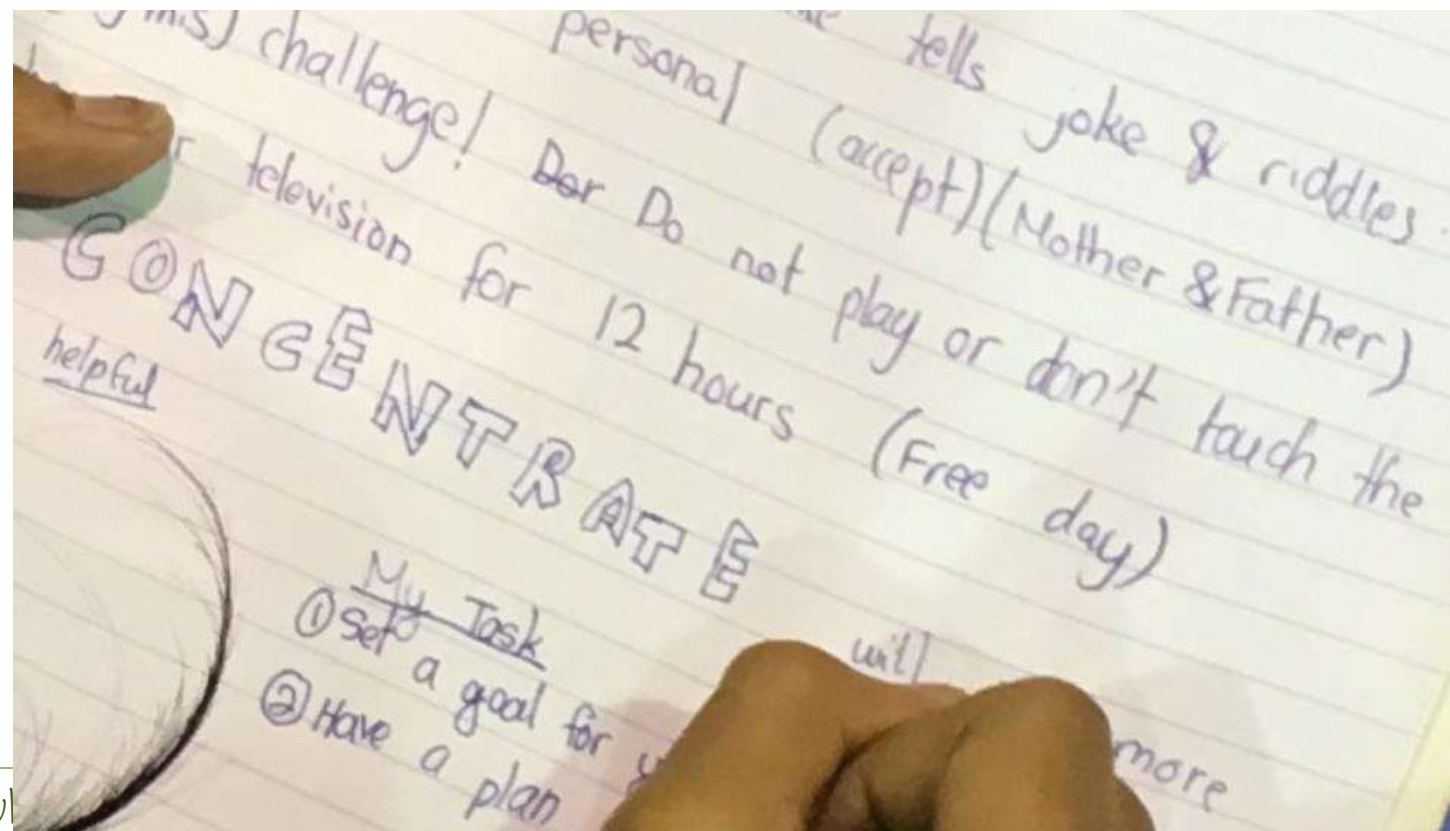
Students will be learning leadership skills throughout the year using The Leader in Me programme.

Part of The Leader in Me involves learning about The 7 Habits of Happy Kids.



YOUR TASK

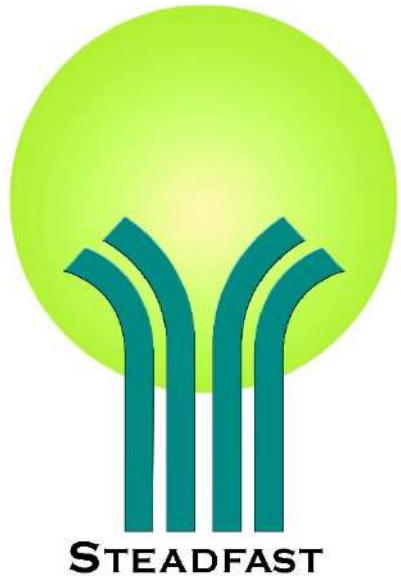
- SET A GOAL FOR YOURSELF
- HAVE A PLAN TO ACHIEVE THE GOAL
- PUT FIRST THINGS FIRST



Teacher Mentors

- Every teacher a mentor to students
 - Form teachers and CCA teachers
 - To grow the 7 habits and virtues in our students
- Morning conversations
 - To speak the language of virtues and facilitate discussion on the virtues
 - Starts from 7.00 am onwards, after students have settled down in class for the morning
- Virtues Challenge Board
 - Visible display of Virtues in class
 - Students are encouraged to display the virtues that they have learnt through their behaviour

**BLANGAH RISE
PRIMARY SCHOOL**



Learning For Life Programme (LLP @ BRPS)

The Learning Campus where we Grow *Deep* and Grow *Together*

LEARNING FOR LIFE PROGRAMME (LLP)

Build upon the school's curriculum on Environmental Education, *Leader for Life*.

Enables students to acquire and demonstrate important life-skills by focusing on **building strong values** and **social emotional competencies**.

Anchors on **environmental education as a platform for students' community service and leadership**.

Learning For Life Programme @ BRPS

Daily canteen and classroom cleaning (whole school)



Learning For Life Programme @ BRPS

Recycling efforts (whole school)

- Reduce: paper, water and electricity
- Reuse: art curriculum (creating crafts)
- Recycle: paper, bottle
- Recycle: rainwater and food waste



LEARNING FOR LIFE PROGRAMME (LLP)

- **Outreach Programs: Recycling Drives**
 - School collaborates with South West CDC and SembWaste. Students collect recyclables for different organisations in exchange for groceries for needy residents.
 - **Promote recycling and raise awareness of the importance of caring for and protecting the environment.**



LEARNING FOR LIFE PROGRAMME (LLP)

- Blooming Garden (whole school)
- Adopts a value-based approach to inculcate virtues such as care, respect and responsibility to create a lasting impact on the students' growth.



The Learning Campus where we Grow Deep and Grow Together

**BLANGAH RISE
PRIMARY SCHOOL**



Ace!

Aspiring Confident Engineers (ACE) @ BRPS

The Learning Campus where we Grow *Deep* and Grow *Together*

Applied Learning Programme (ALP)

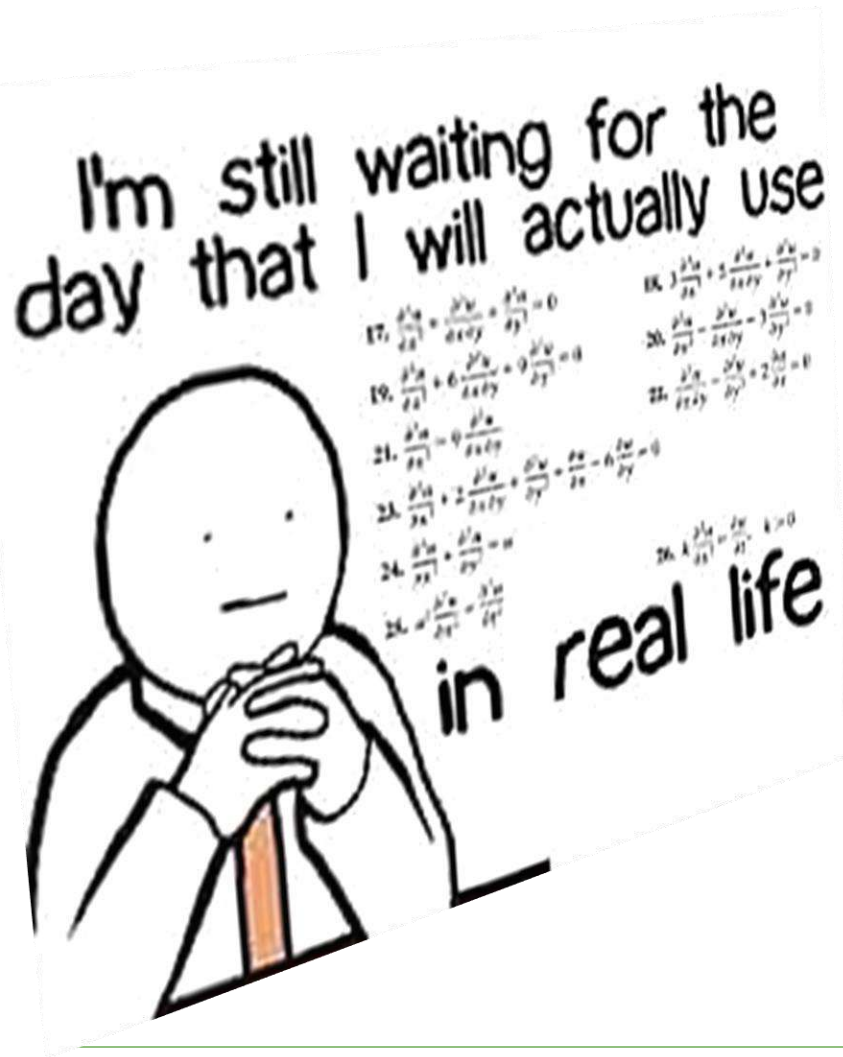
ALP revolves around 3 Big Ideas:

1. Learning about the real world

2. Learning by doing and applying

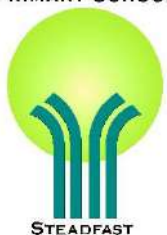
3. Learning for life

Applied Learning Programme (ALP)



Connects classroom learning with real-life applications and encourages students to creatively apply concepts to solve authentic problems.

It focuses on evoking curiosity in learning, developing inventive thinking and encouraging a dare-to-try spirit.



LET'S GIVE OUR STUDENTS **'TIME FOR
THEIR MINDS TO IMAGINE; SPACE TO
EXPERIMENT AND LEARN TO TAKE
RISKS;** AND THE OPPORTUNITY TO
**LEARN FROM FAILING, TRYING AND
TRYING UNTIL THEY SUCCEED'**

EDUCATION MINISTER (SCHOOLS) NG CHEE MENG (MAR 2018)

Engineering Design Learning Activities

P6

Green Engineering

– Students learn how materials and surface colours play important roles in passive solar heating. They are introduced the idea of using the sun as a source of renewable energy. Using this information, students design and build their own solar ovens and test them for thermal gains and loses.



BLANGAH RISE
PRIMARY SCHOOL



HOUSE PRACTICE

- **Purpose :**

Deepen students' holistic development through a structured, after-school enrichment programme.

HOUSE PRACTICE

- **Programme : *Supervised Study Programme;
Sports and Games***
- **Time : *2pm to 5pm***
- **Date : *Wednesday or Friday***
(refer to details in letter to parents)



YOUNG PHOTOGRAPHERS

Viewpoints taps on department programmes from the [English Language Department](#), [Mother Tongue Language Department](#), and [Young Photographers](#) programme to enhance language skills and deliver an authentic learning experience for all students through Print, Broadcast, and Photo journalism.

As part of Viewpoints, this enrichment programme aims to engage the P6 students in applying their [photography skills acquired in P5](#) and to equip them with advanced DSLR skills to handle the camera, shooting techniques (Symmetry) and picture composition.



The Learning Campus



and Grow Together



BLANGAH RISE
PRIMARY SCHOOL



YOUNG PHOTOGRAPHERS

This is carried out in a [Blended Learning](#) approach, whereby students will learn [composition techniques](#) through video tutorials, apply knowledge through [formative assessment activities](#) in Student Learning Space (SLS). In the SLS, they will also use the [Thinking Routine – See Think Wonder](#) to analyse photographs and to deepen their understanding of the topic.

They will then apply knowledge gleaned through hands-on activities in school and outdoor shoot. If outdoor shoots are not possible, students will remain in school for their hands-on practice. The theme will be [The Environment and Creative Photography](#) which will provide students with the authentic resources for [photo journalism in Viewpoints](#).



CREATIVE PHOTOGRAPHY



Blangah Rise Primary School
Young Photographers

Luacan Hannah Derren De Jesus
6 Opal

BLANGAH RISE
PRIMARY SCHOOL



CREATIVE PHOTOGRAPHY



Blangah Rise Primary School
Young Photographers

Ban Xuan Yu
6 Opal

BLANGAH RISE
PRIMARY SCHOOL



STEADFAST

VIEWPOINTS



- This photograph shows the Virtue of Friendliness as Lego toys are lying down together to enjoy the fun time under the sun in the cool water. They are very happy and the photograph shows peace amongst friends. No matter who you are, you can always have friends and experience a wonderful friendship.
- We need friends and friendship. A friend is someone who is there for you and dares to go through hard times with you.

BLANGAH RISE
PRIMARY SCHOOL



The Accelerated Programme to Enhance students' eXperience (APEX)

APEX aims to stretch the academic potential of our P3 to P6 students and nurture their leadership skills.



The Accelerated Programme to Enhance students' eXperience (APEX)

- ❖ English
 - ❖ Debate
 - ❖ Writing
 - ❖ English Competitions
- ❖ Mathematics and Science
 - ❖ Math and Science Olympiad
 - ❖ STEM (Science, Technology, Engineering and Mathematics) projects
 - ❖ Excellence 2000 (E2K) Math and Science (P5)
 - ❖ Math and Science Competitions
- ❖ Mother Tongue Language
 - ❖ Chinese Junior Reporters
 - ❖ MTL Competitions



P6 START SMART

- Morning programme conducted by subject teachers
 - To provide consultation sessions for students who come to school early and need help in their work
- Daily from Term 2
- 7 – 7.30 a.m.



ROAD TO EXCELLENCE

- After school study consultation sessions with subject teachers
 - To provide additional academic support
 - To help our P6 students to be more resilient and have an increased level of self-confidence
- 4 sessions per term



P6 LEVEL CAMP

- To build camaraderie between students and teachers
- To build student's self- confidence and problem solving skills through a series of activities e.g. Team building games, personality profiling, STEM activities etc.
- Term 2 – 2 Days



The Learning Campus where we Grow Deep and Grow Together

BLANGAH RISE
PRIMARY SCHOOL



LEARNING JOURNEY TO SUNGEI BULOH

- Bring lessons out of the classrooms
- Must visit place for pupils learning “Adaptations”.
- Students get to observe animals and plants in close proximity



POST PSLE PROGRAMMES

- A series of programmes and activities that helps develop the student holistically
- Programmes aim to develop students in the following areas:
 - Personal and Social Effectiveness
 - Secondary School Life/Career Awareness
 - Sports and Outdoor Education
 - National Education



The Learning Campus where we Grow Deep and Grow Together

BLANGAH RISE
PRIMARY SCHOOL



SUPPORT PROGRAMMES

- Banded classes for small group teaching
- Subject Remediation
- Supervised Study Programme (SSP)
- Road to Excellence (RTE)



BLANGAH RISE
PRIMARY SCHOOL



The Learning Campus where we Grow Deep and Grow Together

PREPARATION FOR PSLE

- Supplementary classes for students on Tuesdays and Thursdays
- Extra classes during June and September holidays
- PSLE Consultation – subject teachers will provide small group consultation to help students clarify their doubts before the examination

PSLE DATES 2022 (TENTATIVE)

Subject	Dates
Oral Examination	11 August – 12 August
Listening Comprehension	16 September
Written Examination	29 September – 5 October

DSA – DIRECT SCHOOL ADMISSION

General Information

- Application period is from early May to early June.
- Apply through a centralised online system
- Shortlisted applicants will be invited for interviews, auditions or trials.
- More information can be found in MOE website

<https://www.moe.gov.sg/admissions/direct-admissions/dsa-sec>

HOW PSLE SCORING WORKS



 [Changes to the PSLE scoring and S1 posting](#)

 [What you need to know about the new PSLE scoring system](#)

Partnering parents to bring out the best in our children

- As a system, the changes to the PSLE scoring and S1 posting system aim to encourage students to focus on their own learning through reducing differentiation and comparison among students.
- This system shift can only achieve its purpose with the help of parents and teachers, who play an important role in helping our children make learning, not marks, their key focus.
- Teachers can partner parents to look beyond academic performance by:
 - Encouraging them to recognise that every child has different strengths and abilities. With our increasingly diverse secondary school landscape, there will be a variety of good schools and programmes to develop each child's strengths and interest areas, no matter what the child's PSLE Score is.
 - Guiding our children to find the right balance between doing their best academically and pursuing other interests, which develop different aspects of their character.

FROM T-SCORE TO WIDER SCORING BANDS

Reflects a student's individual level of achievement

Students' AL for each subject will reflect their level of achievement, rather than how they have performed relative to their peers.

AL	RAW MARK RANGE
1	≥ 90
2	85 – 89
3	80 – 84
4	75 – 79
5	65 – 74
6	45 – 64
7	20 – 44
8	< 20

FROM T-SCORE TO WIDER SCORING BANDS

- The PSLE Score replaces the T-score aggregate.
- It is obtained by adding the ALs of four subjects.
- The PSLE Score ranges from 4 to 32, with 4 being the best.
- Students will be placed in secondary school courses based on their PSLE score – Express, Normal (Academic) or Normal (Technical).



ENGLISH	AL3
MOTHER TONGUE	AL2
MATHEMATICS	AL1
SCIENCE	AL2

PSLE SCORE: 8

PLACEMENT OUTCOME	PSLE SCORE
EXPRESS	4 – 20
EXPRESS / N(A) OPTION	21 – 22
N(A)	23 – 24
N(A) / N(T) option	25
N(T)	26-30, with AL7 or better in both EL <u>and</u> MA

FOUNDATION LEVEL SUBJECT GRADES TO BE LESS FINELY DIFFERENTIATED

- Under the new AL system, to reduce fine differentiation among students, Foundation subject grades will be graded in 3 scoring bands from AL A to C.
- Like Standard subject ALs, the Foundation subject ALs will reflect a student's level of achievement, rather than how they have performed relative to their peers.

Foundation Level AL Reflected on Result Slip	Foundation Raw Mark Range
A	75 – 100
B	30 – 74
C	< 30

SCORING OF FOUNDATION SUBJECTS FOR S1 POSTING

- A student's PSLE Score is the sum of the four AL scores across his/her Standard and Foundation subjects.
- Students taking Foundation subjects are eligible for the Express Course, as long as they meet the course placement criteria.
- With Full Subject-based Banding in secondary schools, students may also take subjects at a higher level for those that they are strong in.



ENGLISH	AL3
FOUNDATION MOTHER TONGUE	ALB
FOUNDATION MATHEMATICS	ALB
SCIENCE	AL5

PSLE SCORE: 22

PLACEMENT OUTCOME	PSLE SCORE
EXPRESS	4 – 20
EXPRESS / N(A) option	21 – 22
N(A)	23 – 24
N(A) / N(T) option	25
N(T)	26 – 30, with AL7 or better in both EL <u>and</u> MA

HOME-SCHOOL PARTNERSHIP OPPORTUNITIES

Every parent a partner in our
students' education



The Learning Campus where we Grow Deep and Grow Together

BLANGAH RISE
PRIMARY SCHOOL



PARENTS AS STRONG SUPPORT

The Learning Campus where we Grow *Deep* and Grow *Together*

BLANGAH RISE
PRIMARY SCHOOL





By having good home routines, you
are setting your child up for life.



If you do your child's homework, he/she
will lose the opportunity to learn.

The Learning Campus where we Grow *Deep* and Grow *Together*

BLANGAH RISE
PRIMARY SCHOOL





Set up a conducive home environment for your child to learn effectively.

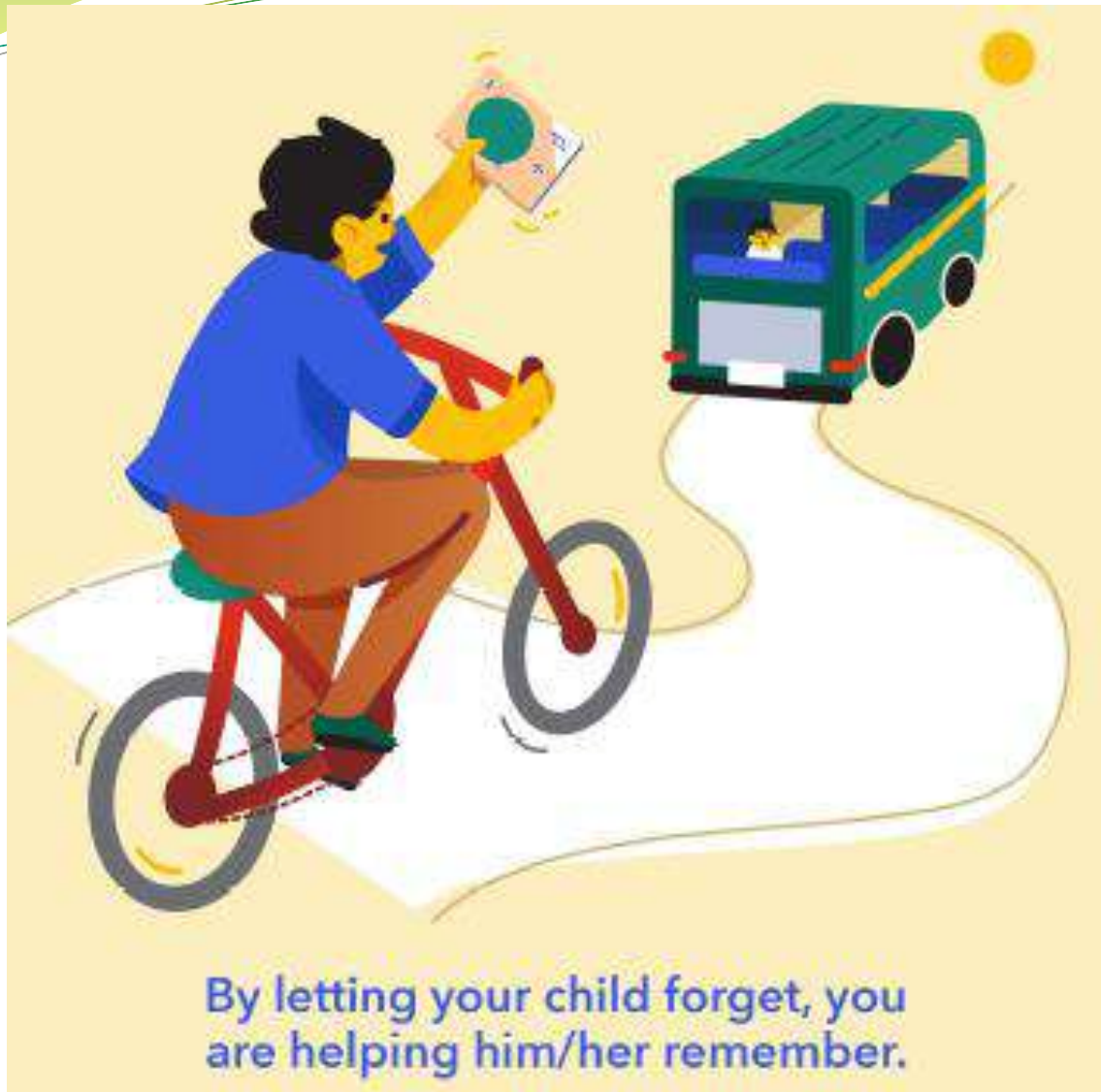


If you keep going to the teacher for daily updates, your child will miss the chance to learn about responsibility.

The Learning Campus where we Grow Deep and Grow Together

3 LANGAH RISE
PRIMARY SCHOOL





The Learning Campus where we Grow Deep and Grow Together

BLANGAH RISE
PRIMARY SCHOOL





Respect the teacher's time, contact the teacher during school operating hours only.



Have heart-to-heart talks with your child. You may be surprised by what you hear!

The Learning Campus where we Grow Deep and Grow Together

BLANGAH RISE
PRIMARY SCHOOL





Be open to the teacher's feedback and observations, and you may learn something new about your child.



By building on your child's strengths and interests, you are helping him/her find his/her place in the world.

The Learning Campus where we Grow Deep and Grow Together

BLANGAH RISE
PRIMARY SCHOOL





Say yes to school activities! Not all lessons are learnt in the classroom.

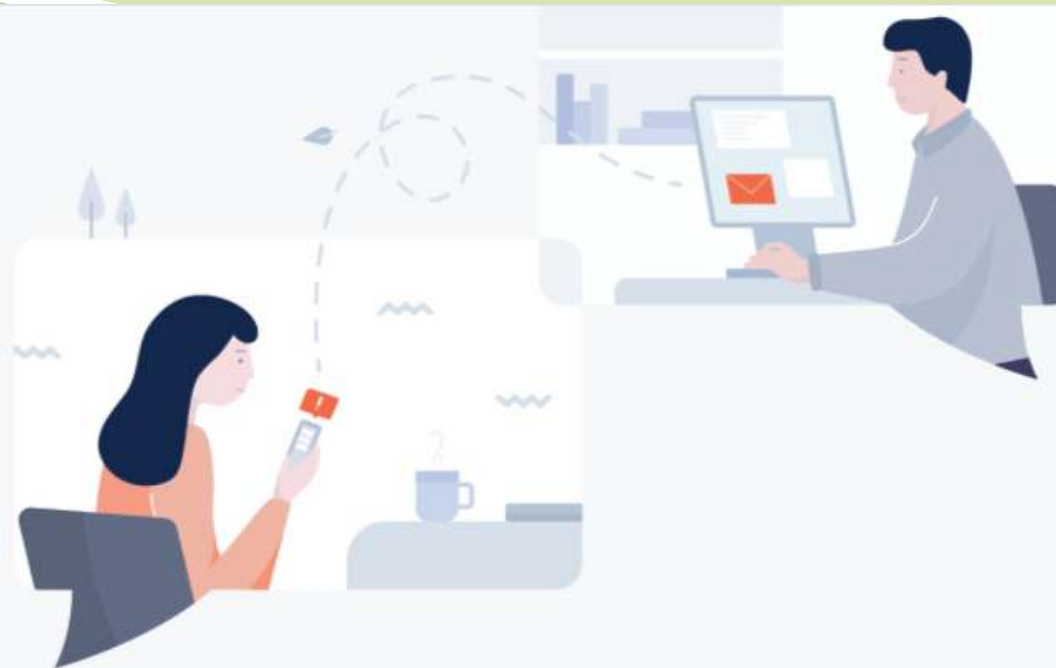
The Learning Campus where we Grow Deep and Grow Together

BLANGAH RISE
PRIMARY SCHOOL



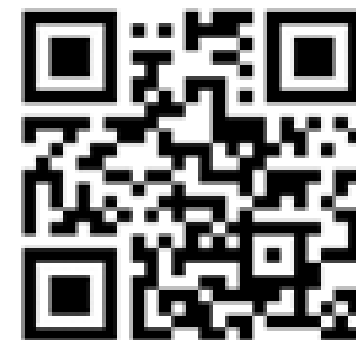
Introducing Parents Gateway

The easier way for schools to
communicate with parents.

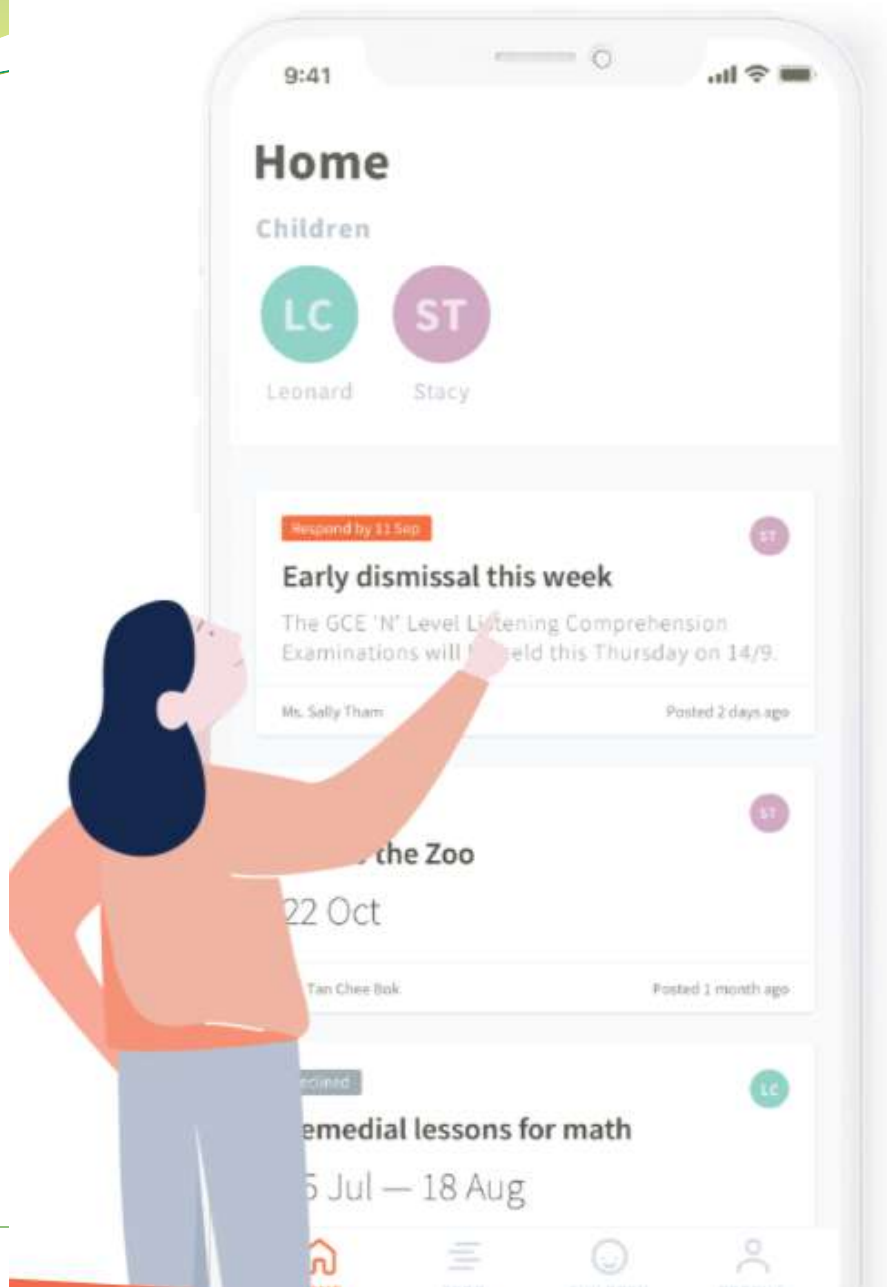


What is Parents Gateway?

Developed by the Ministry of Education and GovTech, Parents Gateway is a one-stop portal that strengthens school-home partnership to support our children in their education journey.



<https://pg.moe.edu.sg/#home>



For Parents

Access all your official school announcements and forms at your fingertips.

Give consent for your child's activities anytime, anywhere.

Receive official announcements directly from schools.

Keep track of upcoming activities for multiple children.



<https://pg.moe.edu.sg/#home>

FAQs for Parents

Get answers to the most frequently asked questions.

Access

Login / Feedback

Features

Troubleshoot

Access

✓ What is Parents Gateway?

^ Who can access Parents Gateway?

Access to Parents Gateway is granted to parents, legal guardians and authorised caregivers of students studying in MOE schools in Singapore. Parents will need to use SingPass to access Parents Gateway.

Contact Us

Have questions about PG?

Drop us a line at:

moe_parents_gateway@moe.gov.sg



<https://pg.moe.edu.sg/faq>

<https://pg.moe.edu.sg/#home>

The Learning Campus where we Grow Deep and Grow Together



The Learning Campus where we Grow *Deep* and Grow *Together*

BLANGAH RISE
PRIMARY SCHOOL

